



# SQUAM LOOKOUT

THE OFFICIAL NEWSLETTER OF THE SQUAM LAKES CONSERVATION SOCIETY

VOL. XIV, No. 2

*"Squam's Land Trust"*

SUMMER 2005

## Annual Meeting 2005

*Forever Squam*



*Photograph by David Roberts*

Newly elected SLCS president Will Abbott presented an ambitious new agenda for land conservation in the Squam watershed at the organization's Annual Meeting on August 20. Speaking before over 200 attendees at the historic Burleigh Barn, Abbott introduced a long-range plan called "Forever Squam." The goal is to increase conserved land in the watershed from the current 12% to 33%, closer to the statewide figure of 28% permanently protected land.

The SLCS will work closely and collaboratively with the Squam Lakes Association (SLA) and the Lakes Region Conservation Trust (LRCT) as principal partners, along with several other organizations to accomplish this important and timely goal. Abbott said, "The time to act is now, while our water quality is still high and before there's further fragmentation of habitat. It's vitally important to help instill the same conservation ethic in our children that has existed here for over a hundred years. Together, we have a unique opportunity to conserve the most pristine large lake in NH. Everyone wins when Squam stays special."



Laurie Beeson and Will Abbott

*Photo by Lowell Schwartz*

LRCT President Tom Curren echoed Abbott's call for concerted action, and discussed the strong possibility of securing some of the funding from large charitable foundations. Curren also made the point that everyone with an interest in Squam will be needed to support this watershed effort. Curren stated "We must act proactively and in unison to protect key properties, starting with Burleigh Land Limited Partnership's announcement of selling a conservation easement on 2,500 acres within the Squam Range."

Executive Director Roger Laroche demonstrated a new geographic information system (GIS) mapping program that marries, via computer, individual lots with key environmental features like animal habitat, old growth forest, and wetlands. "With this information, we're able to initiate discussions about conservation with owners of strategically important parcels, rather than waiting for them to come to us. This ties in well with the vision of Forever Squam," said Laroche.

The SLCS also announced the conservation of 8 properties totaling over 200 acres since the last annual meeting. SLCS now has 59 conserved properties in the Squam watershed. New conservation lands include two parcels on Red Hill, two on High Haith, one in Moultonborough Bay, one in Meredith on Keyser Road, a conservation easement on 120 acres known as Pine Hill, and a preservation easement on an old camp property in Sandwich Bay.

*(continued on page 2)*

## Meet Your New Directors

**Tom Kelsey** first came to Squam as a babe-in-arms in the early 1930s. For many summers following he visited his grandparents at a camp on Mooney Point. After a 20 year hiatus from the late 40s to the late 60s, he and Liz and their three children returned to Squam at Deephaven Camp for a dozen years. In 1980 they built a home on Dog Cove, and 20 years later built their present home on Sturtevant Bay. Tom retired from a 38-year career with Chubb Insurance and then spent five years in Bermuda as CEO of a small reinsurance company; in 1998 he became “gainfully unemployed”. Tom is a Trustee of the Chocorua Chapel Association and a Director of the Squam Lakes Natural Science Center. He has served in a variety of capacities for his Dartmouth alumni class and the Harvard Business School. A resident of New Providence, New Jersey when not at Squam, he serves on the vestry of St. Andrew’s Episcopal Church there. He and Liz have three married children and eight grandchildren, all of whom love Squam Lake!



**Betsy Whitmore** moved to Holderness in 2003 with her husband, Bruce, but their association with Squam Lake goes back more than twenty years as yearly campers at Rockywold-Deephaven. Betsy graduated from Georgetown University in 1971 with a degree in Russian language, and about ten years ago earned a masters degree in education. Currently, she keeps busy as a docent and volunteer instructor at the Science Center, a trail monitor and member of the SLA NATAR committee, and a substitute teacher at the Holderness Central School. Betsy enjoys hiking (just finished number 38 of the 4,000 footers), sailing, gardening, traveling, and admiring the beauty and peacefulness of the Squam watershed. Betsy and Bruce have three children, all attending graduate school or college.



**Peter Wood** and his wife, Jo Ann, bought their house on Sturtevant Bay in 1995, anticipating Peter’s retirement from J. P. Morgan. They sold their Greenwich Village townhouse in 2004 to become year-round Squam residents. A native of the Isle of Jersey, Peter attended boarding school in England, graduated from Oxford University, and later attended Harvard Business School. Upon receiving his MBA in 1966, he joined the international management consulting firm of McKinsey & Company in New York City. From 1981 until his retirement in 1996 he was an investment banker at J.P. Morgan on Wall Street. Since his retirement, Peter has served on the Board of Directors of several NYSE and other publicly traded companies as well as a number of private startup ventures. He is currently a director of Eastman Chemical Company and Middlesex Mutual Assurance in addition to his private company activities. He is a Trustee of the Squam Lakes Natural Science Center, the New Hampshire Music Festival, and the Chocorua Chapel Association.



*(“Forever Squam” continued from page 1)*

In other business, Will Abbott was enthusiastically elected president, succeeding Laurie Beeson, who served as president for three years. Abbott’s fulltime job is as executive director of the Mount Washington observatory. Prior to joining the observatory, Abbott was director of the Squam Lakes Natural Science Center for twelve years. Dick Davenport was elected as an honorary director. New directors include Tom Kelsey, Peter Wood, and Betsy Whitmore.

## SLCS STEWARDSHIP

Many attending our Annual Meeting at Burleigh Farm signed up



*Monitoring Great Island*

to monitor one or more properties this year. We’re really pleased to have new monitors on board, but we still have several properties without monitors. If you’re interested in becoming part of this team, please call or e-mail Jane Blaine at the SLCS office.

# Forever Mapping!

The Squam Lakes Watershed Comprehensive Mapping and Community Outreach Project was in response to a need expressed by local communities during a 2002 watershed survey. SLCS joined a partnership with local planning, conservation, and educational organizations with the goal of providing comprehensive maps of watershed characteristics useful for planning purposes to the Squam community. The data gathered was made available on a CD to all the participants with ArcGIS software last year.

During the winter and spring of 2005, the SLCS began everyday use of the GIS mapping software and the available data to focus on priority conservation areas. While having all this data organized in various layers was tremendously helpful, the missing piece of the puzzle was how to identify ownership of priority areas, and who were the abutters. So, the SLCS took the initiative to digitize all the lots of record (over 3,000) within the eight-town Squam watershed. All the towns except Holderness required having their tax maps scanned and geo-referenced. With outlines of each parcel and the contact information in hand, natural resources could finally be linked with land ownership, providing an invaluable tool for planning and conservation purposes.

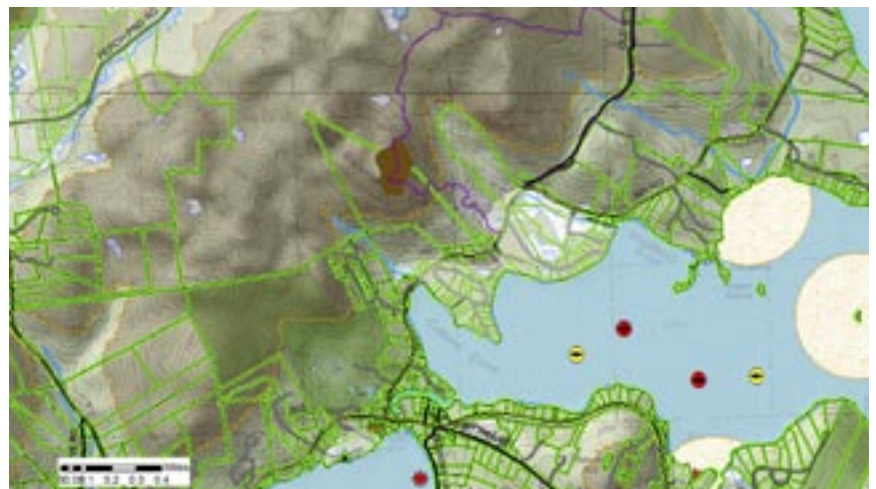
Special thanks to Katie Callahan for guidance and donating a plotter to make large maps, Jonathan Frishtick for helping digitize those countless lots, Paul and Veronica Guyre for funding the purchase of a laptop, Rick Van de Poll for the rare plants and exemplary natural communities layers, and the James Carr family for funding the software acquisition. These tools have transformed the way we view, quite literally, our conservation work. Future steps will be to add more layers of natural features, refine the ownership database with up-to-date contact information, and ultimately, conserve more land!

## Map Layers

- 1992 B & W aerial photographs
- 2003 color NAIP aerial photographs
- Aquifers
- Agriculture (fields)
- Conservation lands
- Co-occurrence habitat attributes
- Current Use
- Drinking water protection zones
- Exemplary natural communities
- Hiking Trails (SLA and non-SLA)
- Invasive plant locations (milfoil)
- In-lake habitats (fish, loons, etc.)
- Lake sub-basins and bathymetry
- Lakes, ponds, streams, wetlands
- Lots (with contact information)
- Old camps (pre-1920)
- Old growth forests
- Political boundaries
- Rare plants
- Real estate on the market
- Roads (public and private)
- SLCS project areas
- Topo (100' contours, steep slope)
- Unfragmented land
- USGS quadrangles with topo
- Watershed delineation
- Zoning



**3-D Image of Red Hill.** Green area is conserved land. Recently, the Wardlaw, Mack, Mayer, & Linglebach families have pledged or placed their land into conservation status. Look for details in the next issue of the “Squam Lookout.”



**Image of Holderness lots, with Cotton Mountain center.** Note large patch of old growth forest near summit, shown in brown. Use of the mapping software provided SLA with additional information to move quickly to purchase this lot for conservation.

## SQUAM LOOKOUT

Vol. XIV, No. 2, Summer 2005

Squam Lakes Conservation Society

P.O. Box 696

Holderness, NH 03245

603-968-7900

[www.squamlakes.com](http://www.squamlakes.com)

[roger@squamlakes.com](mailto:roger@squamlakes.com)

[jane@squamlakes.com](mailto:jane@squamlakes.com)

### Officers

**Will Abbott**

*President*

**Laurie Beeson**

*Vice President*

**Paul Guyre**

*Vice President*

**R. Angus West**

*Treasurer*

**David Sinkler**

*Secretary*

### Board of Directors

**Rachel Armstrong**

**Peter Coolidge**

**Jerry English**

**Peter Harris**

**Tom Kelsey**

**John Morgridge**

**Peter Richards**

**CC Stockly**

**Peter K. VanWinkle**

**John Waldhausen**

**Lisa Wardlaw**

**Betsy Whitmore**

**Peter M. Wood**

### Honorary Directors

**Ellen Bennett**

**Richard Davenport**

**Nancy Grady**

**Daphne Mowatt**

**Bert Read**

**Beverly Ridgely**

**Rawson Wood**

### Staff

**Roger B. Larochelle**

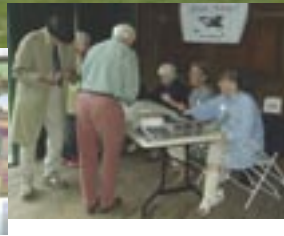
*Executive Director*

**Jane R. Blaine**

*Administrator*

*Printed on recycled paper*

# ANNUAL MEETING 2005



*Photos by Lowell Schwartz*

Special thanks to Dave Roberts for allowing us to reproduce his photograph of the view from Mt. Percival for our 10' x 2.5' "Forever Squam" banner. We have reproduced it on the front of the newsletter for those of you who were unable to see the original at our Annual Meeting.

### RETURN SERVICE REQUESTED

Website: [www.squamlakes.com](http://www.squamlakes.com)

[jane@squamlakes.com](mailto:jane@squamlakes.com)

E-mail: [roger@squamlakes.com](mailto:roger@squamlakes.com)

Fax: 603-968-7903

Phone: 603-968-7900

Holderness, NH 03245

P.O. Box 696

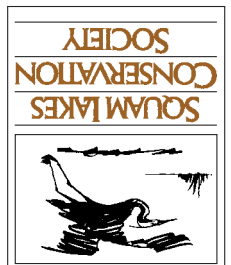
Conservation Society

Squam Lakes

*Published by the*

Vol. XIV, No. 2

**Squam Lookout**



NON-PROFIT ORG.  
U.S. POSTAGE  
PAID  
HOLDERNESS, NH  
PERMIT 2