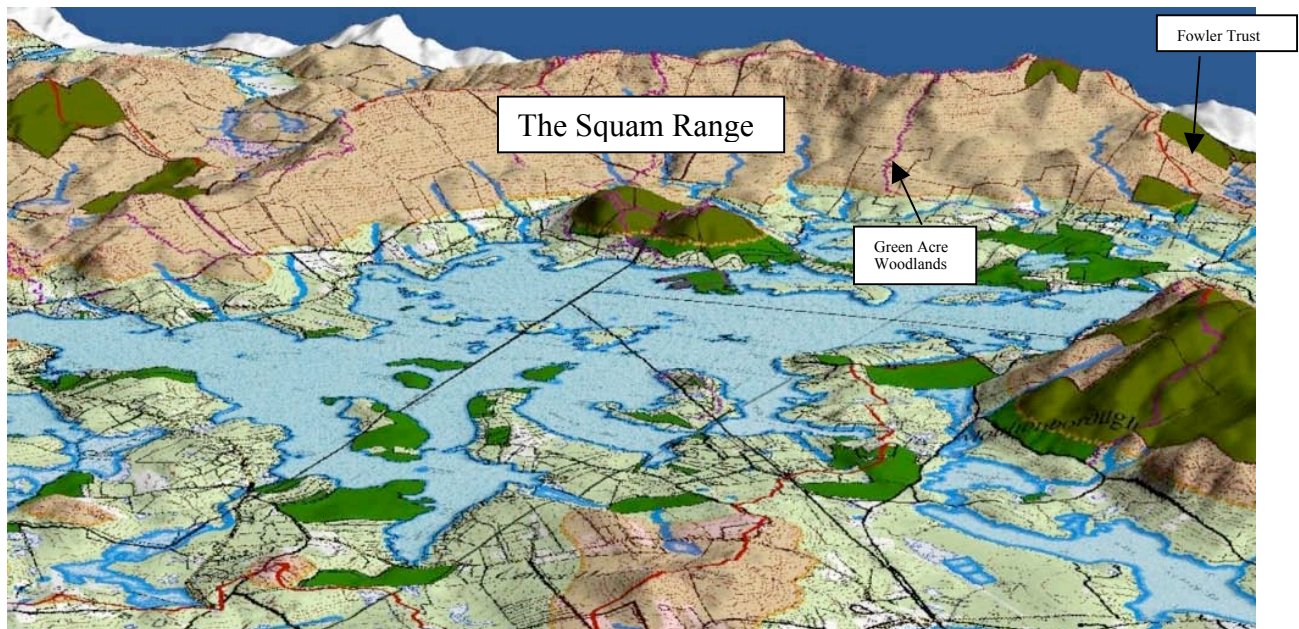


Squam Lakes Conservation Society

CONSERVATION OF THE SQUAM RANGE Bargain Purchases of Green Acre Woodlands and Fowler Trust December 2005

The Squam Mountain Range is one of the largest unfragmented wilderness areas (13,461 acres) in central NH and comprises 60% of the land in the Squam Watershed, contributing significantly to the pristine quality of the Squam Lakes. Its extensive wildlife habitat, tradition of low-impact recreation such as hiking and back-country skiing, well managed forests, and connection to the protected lands of the White Mountain National Forest make the Squam Range the largest and most important conservation project in the region.



Conservation of the Squam Range

During the summer of 2005, Burleigh Land Limited Partnership announced that it will place 2,500 acres of the Squam Range into conservation by selling a conservation easement to the Lakes Region Conservation Trust, with the SLCS as reverter. That campaign is now well underway. Meanwhile, the Squam Lakes Association recently purchased a 58-acre parcel on the west portion of the Squam Range leading up to the summit of Cotton Mountain, with the SLCS as the conservation easement holder.

Working with our partners and our new strategic mapping capabilities, a plan for the remainder of the Squam Range led to a specific effort by us to buy two important parcels; Green Acre Woodlands and Fowler Trust. Both are in Sandwich on the east side of the Range. Since they were not on the market or candidates for immediate development, we were able to negotiate very attractive purchase prices.

Green Acre Woodlands

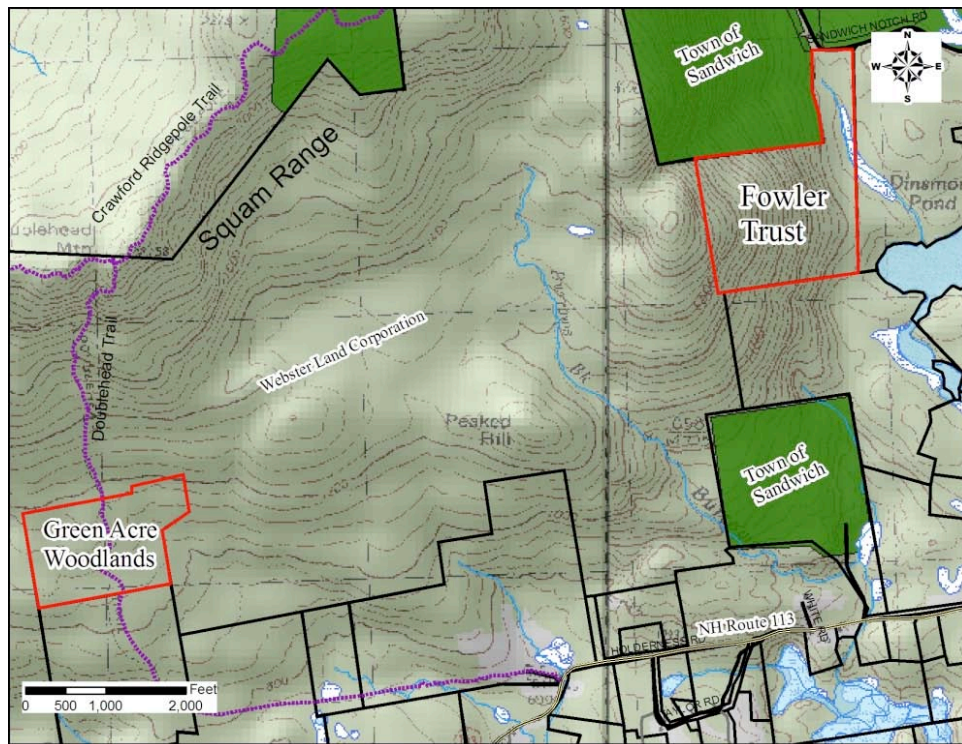
This 55-acre parcel lies just above the MacCrellish lot (82 acres with a new residence almost completed). It is the highest elevation land on the Squam Range not owned by either Burleigh Land Limited Partnership or the Webster Land Corporation. The trail up to Doublehead Mountain goes right through the middle of this magnificent woodlot. The lot has commanding views of Squaw Cove and the broads of the lake, and could accommodate several large homes.

An option to purchase this land from Green Acre Woodlands (Marcal Paper) for \$52,500 has been recorded. Our goal is to raise \$60,000 to conserve this property as a woodlot with no buildings or improvements other than maintenance of the existing trail.

Fowler Trust

An 86-acre undeveloped parcel linking the Squam Range to the Sandwich Notch Road (400 feet of road frontage), this woodlot has been held by members of the Metcalf family since 1924. A portion of the original lot included Beede Falls (given to the Town of Sandwich by Susan Bacon Keith) and the existing Sandwich Town Forest. Descendants Daphne Metcalf Mowatt and Anne Metcalf Perkins both wanted this parcel to be conserved, agreeing to a bargain sale to the SLCS.

The lower part of this lot is relatively flat, with an old logging road and wetlands draining into Dinsmore Pond. The majority of the land is uniformly sloped up to the peak known locally as Beede Mountain. Stone walls bound almost the entire perimeter. This lot could be subdivided into several lots, some with commanding views. Our goal is to place this parcel into a “Forever Wild” status. With timber lots to the north, west, and south, this action will help establish an old growth forest in the many years ahead. We need to raise \$70,000 to permanently protect this land.



For additional information please contact:
Roger Larochelle 968-7900 or Laurie Beeson 968-2409